

# Schlage Keypad Deadbolt

Model BE365 CAM 619

---

## User Guide



Online Reference:

[http://consumer.schlage.com/project%20documents/23780042%20fe%20and%20be-series%20user%20guide-a\\_web.pdf](http://consumer.schlage.com/project%20documents/23780042%20fe%20and%20be-series%20user%20guide-a_web.pdf)

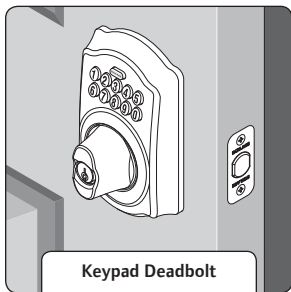


# Keypad Locks

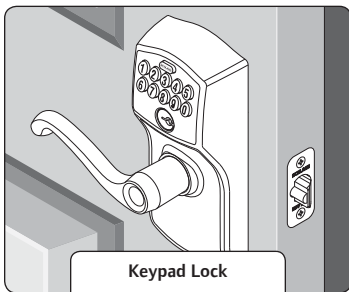
User Guide



23780042



**Keypad Deadbolt  
(BE365)**



**Keypad Lock  
(FE575, FE595)**

## Contents

|  |          |
|--|----------|
| <b>Keypad Deadbolt (BE365)</b> .....       | <b>2</b> |
| Lock Parts.....                            | 2        |
| Standard Operation .....                   | 2        |
| Replacing the Battery .....                | 3        |
| Emergency Key Override.....                | 3        |
| Emergency Lock Override.....               | 3        |
| <b>Keypad Lock (FE575 and FE595)</b> ..... | <b>4</b> |
| Lock Parts.....                            | 4        |
| Standard Operation .....                   | 4        |
| Emergency Key Override.....                | 5        |
| Replacing the Battery .....                | 5        |
| <b>Restore Factory Settings</b> .....      | <b>6</b> |
| <b>Troubleshooting</b> .....               | <b>6</b> |
| <b>Glossary</b> .....                      | <b>7</b> |
| <b>My Codes</b> .....                      | <b>8</b> |

## Need Help?

Visit our web site for videos, FAQs and more. Please contact Customer Service before returning the lock.

➤ [keypad.schlage.com](http://keypad.schlage.com)



Calling From:

U.S.A.: (888) 805-9837

Canada: (800) 997-4734

Mexico: 018005067866

# Keypad Deadbolt (BE365)

## Lock Parts

### Keypad

- Used to enter codes for programming and unlocking. See the **Keypad Locks Programming Guide** for more information.

### Outside Thumbturn

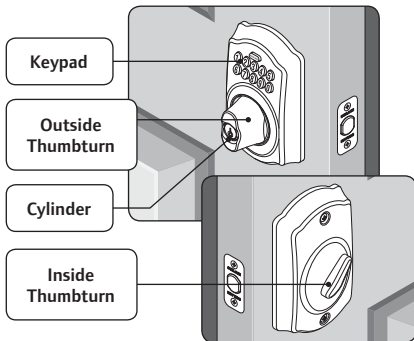
- Used to unlock the lock after a valid User Code has been entered, or to lock the lock after the Schlage button has been pressed.

### Cylinder

- Used only in emergency situations to unlock the lock. See **Emergency Key Override** on page 3.

### Inside Thumbturn

- Used to lock or unlock the lock.



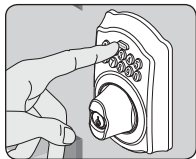
## Standard Operation



*If lighting is low, press the Schlage button to illuminate the keypad before beginning.*

### Locking

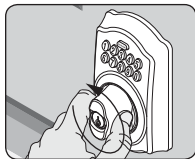
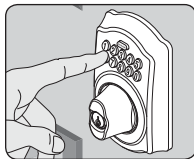
1. Press the Schlage button.\*
2. Rotate the thumbturn away from the hinges.



\* If the Turn Lock feature is disabled, a valid User Code must be entered to lock the door. See **Turn Lock Feature** on page 7.

### Unlocking

1. Enter a User Code into the keypad.
2. Rotate the thumbturn toward the hinges.

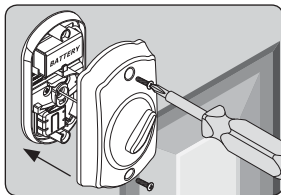
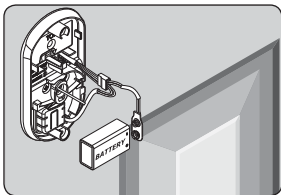
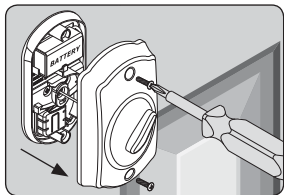


### Online Reference:

[http://consumer.schlage.com/project%20documents/23780042%20fe%20and%20be-series%20user%20guide-a\\_web.pdf](http://consumer.schlage.com/project%20documents/23780042%20fe%20and%20be-series%20user%20guide-a_web.pdf)

## Replacing the Battery

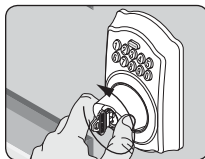
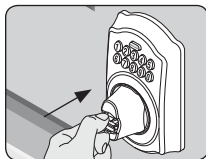
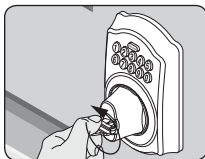
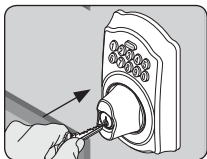
1. Remove the inside cover.
2. Replace the battery.
3. Re-tuck wires so they will not be crimped. Replace the cover.



## Emergency Key Override

Emergency Key Override can be used to gain access when the battery is completely dead, when no valid User Code is known or when Emergency Lock Override is engaged.

1. Insert the key into the cylinder.
2. Rotate the **key** 90° toward the hinges.
3. Push the **key and cylinder** into the thumbturn.
4. Rotate the **thumbturn** 90° toward the hinges.<sup>†</sup>

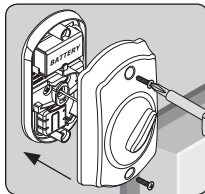
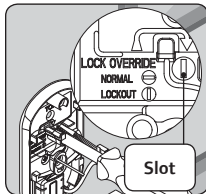
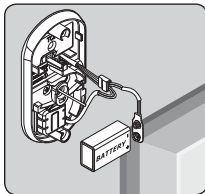
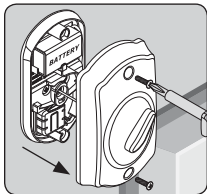


<sup>†</sup> Reverse steps to lock. The key cannot be removed from the cylinder while the lock is unlocked. See **Replacing the Battery** on page 3 or **Restore Factory Settings** on page 6 for more information.

## Emergency Lock Override

Emergency Lock Override can be used to completely disable the keypad. When engaged, a key must be used to unlock the lock. See **Emergency Key Override** on page 3.

1. Remove the inside cover.
2. Disconnect and remove the battery.
3. Rotate the slot on the mounting plate to the **LOCKOUT** position.
4. Re-tuck wires so they will not be crimped. Replace the cover.



# Keypad Lock (FE575 and FE595)

## Lock Parts

### Keypad

- Located on the outside of the lock.
- Used to enter codes for programming and unlocking.

### Lever

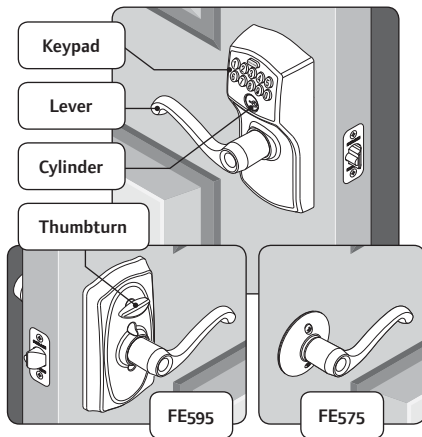
- The inside lever can be rotated at any time to retract the latch.
- The outside lever can be rotated at any time, but will only retract the latch when the lock is unlocked.

### Cylinder

- Located on the outside of the lock.
- Used only in emergency situations to unlock the lock. See **Emergency Key Override** on page 5.

### Thumbturn

- FE595 ONLY: Used to put the lock in a locked or unlocked state.



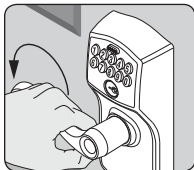
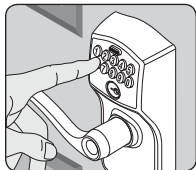
## Standard Operation



*If lighting is low, press the Schlage button to illuminate the keypad before beginning.*

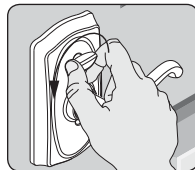
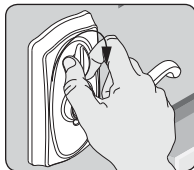
### Temporary Unlocking

1. Enter a User Code into the keypad.
2. Rotate the lever to open the door. Door will automatically re-lock.



### Setting to Unlocked State (FE595 Only)

1. Rotate the inside thumbturn to the vertical position.\*
2. Rotate the thumbturn back to the horizontal position to re-lock.

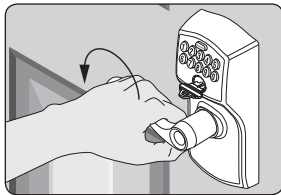
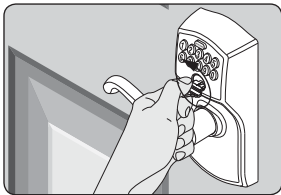
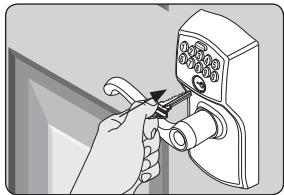


\* No User Code is required to open the door when the lock is in this state.

## Emergency Key Override

Emergency Key Override can be used when the battery is completely dead, or when no valid User Code is known.

1. Insert key.
2. Rotate key 270° to unlock.
3. Rotate knob/lever to open door.\*

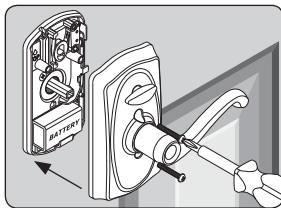
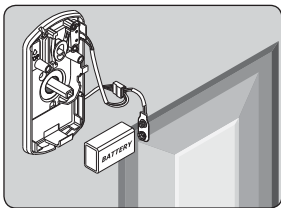
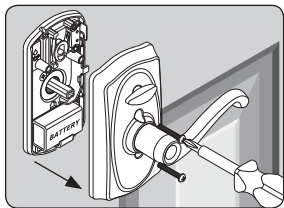


\* Rotate the key back to starting position to relock. The key cannot be removed from the cylinder while the lock is unlocked. See **Replacing the Battery** on page 5 or **Restore Factory Settings** on page 6 for more information.

## Replacing the Battery

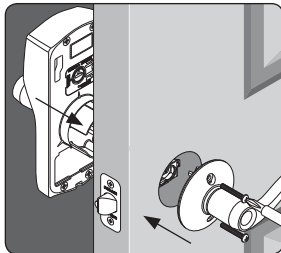
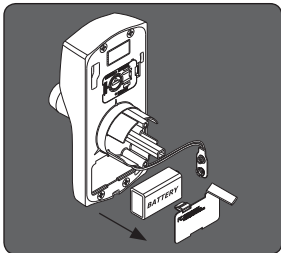
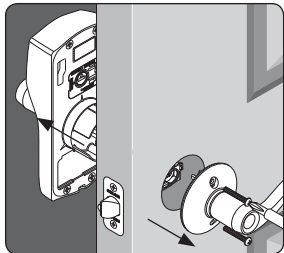
### FE595

1. Remove the inside cover.
2. Replace the battery.
3. Replace the cover.



### FE575





1. Remove the lock from the door.
2. Open the battery compartment and replace the battery.
3. Replace the lock.





## Restore Factory Settings




**WARNING:** Locate the default programming and User Codes on the front of the **Keypad Locks Programming Guide** or the back of the keypad before beginning! Default programming and User Codes will be restored. All existing User Codes and current Programming Code will be erased. **Customer Service cannot retrieve lost default codes! Do not restore factory settings unless you can locate the default codes.**

1. Disconnect the battery. For BE365, see page 3. For FE575 and FE595, see page 5.
2. Press and release .
3. Reconnect the battery and wait until  is no longer lit.
4. Within 10 seconds, press and hold  until  lights green and the lock beeps.

## Troubleshooting

| Problem  | Beeps*              | Lights                | Solution  |
|--|---------------------|-----------------------|---|
| I can unlock my deadbolt by simply pushing the Schlage button. I don't need a code.  | 1 High              | Green Blinking        | <b>Your lock has been installed incorrectly and is not secure.</b> Repeat the installation process. Ensure the cam and bolt positions are correct, as referenced in the installation instructions.        |
| BE365: after pushing Schlage button and rotating thumbturn, the deadbolt does not extend.                                      | None                | None                  | Turn Lock feature is disabled. See the <b>Keypad Locks Programming Guide</b> for instructions to enable the Turn Lock feature.  |
| I forgot my Programming Code.  | None                | None                  | Check front of Keypad Locks Programming Guide or back of keypad assembly for default Programming Code.<br>If needed, restore lock to factory settings. See <b>Restore Factory Settings</b> on page 6.     |
| Outside thumbturn does not freely spin after deadbolt is thrown.   | None                | None                  | Lock is malfunctioning. See <b>Emergency Lock Override</b> on page 3. Call Customer Service.  |
| I need to delete a User Code that I don't remember.  | None                | None                  | Delete all User Codes. Then add all needed User Codes back into the lock. See the <b>Keypad Locks Programming Guide</b> .   |
| User code does not unlock lock.  | 2                   | Red                   | User Code entered is not a valid User Code.   |
|  | 1 High,<br>1 Low    | Green then<br>Red     | Vacation Mode is enabled. See the <b>Keypad Locks Programming Guide</b> to disable Vacation Mode.   |
|  does not light when numbers are pressed.       | None                | None                  | Too many incorrect User Codes have been entered. Wait 30 seconds and try again.<br>If keypad does not respond after 30 seconds, then replace battery. For BE365, see page 3. For FE575 and FE595, page 5. |
| There is a delay before unlock after a valid User Code is entered.   | High/Low,<br>then 1 | Red then<br>Green     | Battery is low and should be replaced. For BE365, see page 3. For FE575 and FE595, page 5.  |
|  blinking red but no codes have been entered. | None                | Quick Red<br>Blinking | Battery is dead and <b>MUST</b> be replaced. For BE365, see page 3. For FE575 and FE595, page 5.  |

| Problem                                 | Beeps*   | Lights | Solution   |
|---|----------|--------|--|
| Cannot add a new User Code.             | High/Low | Red    | 19 User Codes already exist. Delete a User Code before adding a new one. See the <b>Keypad Locks Programming Guide</b> .   |
|   | 2        | Red    | Second User Code entered did not match first User Code entered.<br>The User Code matches the first four digits of the existing Programming Code.                 |
| Cannot delete a User Code.              | 2        | Red    | Second User Code entered did not match first User Code entered.  |
| Cannot change Programming Code.         | 2        | Red    | Second Programming Code entered did not match first Programming Code entered.  |
|   |          |        | First four digits of new Programming Code match an existing User Code.   |
| Cannot delete all User Codes.           | 2        | Red    | Programming code entered second time is incorrect.   |
| Lock will not stay in programming mode. | 2        | Red    | Any key other than  was pressed immediately after programming mode was entered. |
|   |          |        | An incorrect entry was made during the programming process. See the <b>Keypad Locks Programming Guide</b> .  |

\* Number of beeps if beeper is turned on.

## Glossary

### User Code

Any combination of four (4) digits entered into the keypad to unlock the lock. These four digits must be different from the first four digits of the Programming Code. Two User Codes are programmed into the lock by default. These two codes can be found on the yellow stickers, one on the back of the keypad assembly and one on the **Keypad Locks Programming Guide**.



*It is recommended that you change your User Codes on a periodic basis so buttons wear evenly.*

### Programming Code

Any combination of six (6) digits entered into the keypad to put the lock in programming mode. The first four digits must be different from all of the User Codes currently in the lock. One Programming Code is programmed into the lock by default. This code can be found on the yellow stickers, one on the back of the keypad assembly and one on the **Keypad Locks Programming Guide**.

### Turn Lock Feature

When enabled, the Keypad Deadbolt (BE365) can be locked from the outside by pressing the Schlage button and then rotating the thumbturn. When disabled, a User Code must be entered before rotating the thumbturn. The Turn Lock feature is enabled by default. Disabling this feature keeps an unauthorized person from locking the lock from the outside.


### Vacation Mode

When enabled, no User Codes will unlock the lock. This feature prevents unauthorized access attempts when the property is unattended for a long period of time. See the **Keypad Locks Programming Guide** for more information.



# My Codes


Use these tables to record programming and User Codes that you program into the lock. For programming instructions and default codes, see the **Keypad Locks Programming Guide**.

 Use a pencil to enter the codes in the boxes so you can easily change them later.

## Programming Code

| Date | Programming Code |  |  |  |  |  |
|------|------------------|--|--|--|--|--|
|      |                  |  |  |  |  |  |

## User Codes

 Up to 19 User Codes can be stored in the lock at one time. Consider changing your User Codes on a periodic basis so buttons wear evenly.

| User Name           | User Code |   |   |   |
|---------------------|-----------|---|---|---|
| Example: John Smith | 1         | 2 | 3 | 4 |
| 1.                  |           |   |   |   |
| 2.                  |           |   |   |   |
| 3.                  |           |   |   |   |
| 4.                  |           |   |   |   |
| 5.                  |           |   |   |   |
| 6.                  |           |   |   |   |
| 7.                  |           |   |   |   |
| 8.                  |           |   |   |   |
| 9.                  |           |   |   |   |
| 10.                 |           |   |   |   |
| 11.                 |           |   |   |   |
| 12.                 |           |   |   |   |
| 13.                 |           |   |   |   |
| 14.                 |           |   |   |   |
| 15.                 |           |   |   |   |
| 16.                 |           |   |   |   |
| 17.                 |           |   |   |   |
| 18.                 |           |   |   |   |
| 19.                 |           |   |   |   |